



Kimniege **TAMI** **Newen**

Conoce TU Energía

| | |
|--|----------------------------------|
| | <p>Ministerio de Energía</p> |
| | <p>Gobierno de Chile</p> |



Conoce TU Energía

Ministerio de Energía
Unidad de Educación Energética
Enero de 2018



minenergia



@MinEnergia



MinisteriodeEnergia



minenergia



www.energia.gob.cl y www.miennergia.cl

Traducción: Necul Heriberto Painemal Morales
Profesor, Linguista, Magister en Letras, Investigador y Conferencista Mapuche.

Kimniege **TAMI** **Newen**



TRAFUWÜN NEWEN KA FILLCHE

Norkünule ta newen tayiñ kümelkaleam rume kümeafui ta feichi küpaluchi che. Feimeu zuamnieyiñ kim konal ta che küme niewal ta newen, küme leliniewal ñi küme malütuwal ta newen, feimu kümei ñi kimal, chumgechi küzautuniewal, feimu zoi küme amulnieayiñ tañi kümelkayam ta kom che trürleam kom ka amulniewal fill meu tayiñ mapu.

Fachi pichi chillka nieaimi mi kimal, chemgen ta feichi newen zugu feimeu kellugetuaimi mi kimal ka müllokonal fachi zugu ka amul nieaimi fachi newen mülelu tayiñ Chile mapu.

CHEMAM TA NEWEN?

Feiti newen fill mogen meu mülei. Feichi newen meu chem kalül rume kam chem mülen fill meu wallontu mapu mu trafkintuafui negüm meu, pelom kam are. Ka famgechi: chumül ikeyiñ nentukeyiñ newen ñi zeumayal ta negüm kam küzau, zeuma iyael meu afümtuam iyael pekünuwal television kam pelomtuwal tañi ruka meu zuamiyiñ electricidad pigechi newen.



Feichi newen mülei
fill meu



$$E=mc^2$$

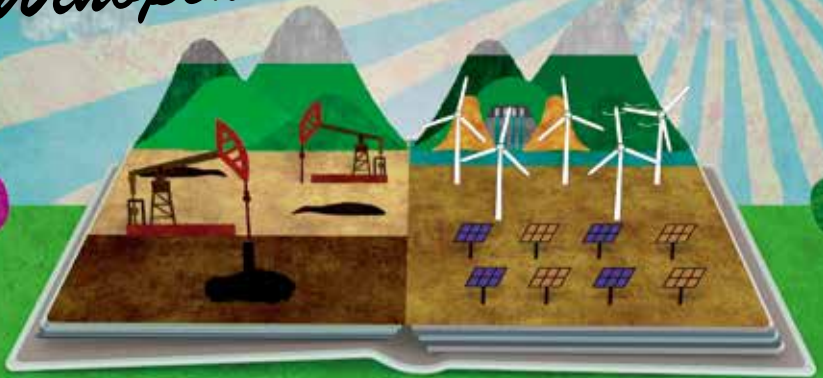


MÜLEKEI KAKEUMA NEWEN?

May, cheu ñi tripalen, cheu tripalele newen feipiafuiyiñ feichi wiñolerkelu kam ñamkelu newen. Wiñotukelu newen kai fey ta afkenolu tripalechi ta wilüfantü mu, newen kürüf meu, newen ko meu kam feichi are tripalechi ponwi mapu meu ka rume mülei tayiñ Chile mapu meu.

Wiñopenolu newen feyta tripaperkelu ta mapu mu ka aftukey amunchi antü mu. Kiñe kay tripalekei ta münche mapu futa kuifi ñi mülemum ñi zeumagen ka kiñeke kay tripalei ponwi mapu mu ta üyümgechi ko petróleo pigelu, feichi kuyul kam feichi üyüm kürüf mapu tripalu.

Wiñopenolu newen



Wiñotukelu newen

Chumgechi puwi ta newen tami ruka meu?

Feichi electricidad newen puwkey tayiñ ruka meu, tayiñ küzauken trokiñ, fey ta külagechi troy niei: **zeumagemum, amulniegen ka wizpüniegen.**

ZEUMAGEMUM

Wünelumu feichi newen tripalerkei ta cheu nentugekei newen, feichi newen kintugei ta üyüm kura kuyul meu, feichi üyümgechi kürüf tripalu mapu meu, witrunko meu, wilif antü meu, kürüf newen ka feichi Centrales cheu nentugei ta newen mülerkei ta kom Chile mapu mu ka feimeu mülei ta feichi cheu mülelu ta kakeume newen nentual chumgechi gen ta mapu.




AMULNIEGEN

Inagechi leligei chumgechi yegealu ta feichi newen cheu ñi tripamum ka anümgei feichi fütake ügko fill püle yegeam ta newen. Kom feichi zeuman tañi yegepuam ta feichi newen cheu zuamniegei küzawam.

WIZPÜNIEGEN

Wechun meu tañi nüwam ta electricidad newen, elugei ta trawünpelu zeumayam feichi tripan meu feichi newen pünakonal mülekei inei wüzpükelu. Mülei ünko kam münche mapu amulu pagillwe amulniegei ta waria ka lof mapu mu wülkefi newen tayiñ ruka, lawentuwe ruka, chillkatuwe ka rüpü meu.





*Chem am ta
feichi newen
tripakelu
antü meu?*

Feichi newen tripakelu antü meu afkelay, llougekey feichi “paneles fotovoltaicos” pigechi pagillwe trapümkelu antü eñum, fei ta llowkei antü ñi are feymu zeumakei feichi electricidad newen kam are.

Feichi antü newen meu tripakei ta electricidad. Trapümkelu antü ñi are celda fotovoltaica pigechi pagill weumakei ta pelom antü mu feichi electricidad newen tañi niewal tayiñ ruka meu.

Fey ti chi aremkelu ko, antü meu tripakelu ñi newen, nükey ñi newen tripakelu antü meu, feimeu nentugei are ka eñumkei ta ko, fey tufa konkey taiñ müñetuwe meu mülelu ruka meu kümeke areko ka cheu zeumagekei chemkün tukugei ñi küme küruf niewal, ankümalu, ka wazkün iyael meu. Ka feula konkülei negümal ta yechepelu pagillwe.



Tayin Chile mapu zoi rume niey antü ñi eñum “radiación solar” pigekei zoyelküley ta Atacama pigechi mapu ka willimapu zoi pichi niei welu niei, fey leliayiñ chumgechi nentuafiyiñ antü ñi newen fill püle.

Tüfachi antü newen puwafuy cheu puwkenon kake zugu, ka nentukelay wechake kürüf nentugeyim ka fachantü ta trürley fey tichi newen tripakelu münche mapu mu, ka kelluntukey cheu tripakelu kizuke newen ka fill mulenmukei.

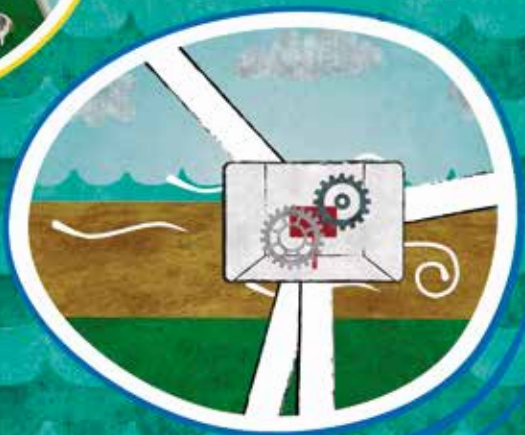


Fhem am ta newen tripakelu ta kürüf meu?



Fey ti kürüf newen afkenochi newen gei, fey nentukei ta newen pu kurüf ñi amuleken fill püle ka negümkei fütake aspawe zeuma newen mekelu pagillwe, fey mu feichi negüm tripamekei feichi electricidad newen mülen mu ka kiñe pagilwe generador, pigekei zeuma newenkelu.

Fey ti chi pu turbina kürüf meu negümlu anümüleafuy wente mapu ka lafken meu, fey tufa chi zugu katrüntukelay kake küzau mapu, niepen kullin rume.



Tayin Chile mapu mu fachi kürüf newen ka antü tripaken newen, feyta afkenolu newen zoilechi wülkelu newen ñi niewal electricidad newen fill mapu mu.

Nüwkülen ta kürüf ñi newen meu, feyta genole kürüf tripalayafuy feymu müley ñi trapümgeal kake zeumaken pagillwe, ñi müleam fillantü feichi electricidad newen.

Tüfachi kürüf newen Chile mapu meu niegen küzawyefi fey küme müleam ta fill antü ñi wülkenon wecha ke kürüf wezalkakelu mogen.



Chem am ta tripakelu ponwi mapu newen?

Feichi newen tripakelu ponwi mapu meu fei ta afkenolu newen gei, tripakei ta feiti eñum ponwi mapu mu. Kimgekei tunten ñi aregen kam ñi eluwün eñum cheu ñi mülen ka feichi zugu “**entalpía**” pigekei.

Tayiñ mapu mu nieyiñ fentren cheu tripaken areko pülle zegüñ meu fey meu kintugekei zoi amulniewal feichi “entalpía” ka pichiken entalpía, nentugekei feichi eñum newe ponwi feichi mapu meu.



Tüfa chi newen negümkei zeumageken chemkün,
ruka meu ka feychi cheu aukantukei ta che, zuamgei
ta electricidad newen, eñumal ruka, fill püle, cheu
choyimgei anümka, ankütuam mamüll, cheu choyimgei
challwa, müñetuam areko meu, zeumageken chemkün
zuamgelu are kam wütre.

Tayıñ Chile mapu wünelumu zeumai cheu tripamum
ponwi mapu ñi newen fill willi America meu, tañi
amulniewal ñi tremüm ka kintulen we kümeke ka lifgechi
newen tañi niewal tayıñ Chile mapu.



Küme kürüf niewal



**Trípalechi are
ko mapu meu**



**Zeumagemum
chemkum ruka**



Eñumtual ruka



Takuntuam tukukan



**choyimpelu
challwa**



Ankütuam mamüll

Chem am ta nentugeken ko newen?



Fey tichi ko newen afkenolu newen gei, fei ta nentugei ta cheu mülen fütrake witrunko feymu negümkey fütrake aspawe turbina pigekei fey nentugei electricidad newen. Zoygele feychi witrunko ka zoi külügele zoi tripakerkei newen cheu mülen mu zeumagemum feichi newen.

Müley fey ti centrales cheu katrütugekey ko fey mew gülümgekey ta ko kiñe wechoz mapu mu cheu amulei kiñe leufü fey meu apogekei zoi newen nentugeal fei meu.

Ka müley fey ti rupangechi central, fey meu nentugekey chag reke feyti leufü, tukulgekey fütrake tuberia meu, fey mew nentugekey feichi newen cheu rupamum. Tufa ta newe wezalkakelay mapu pigekey wiño tukuken ko cheu ñi kizu amuken.



Ka müley kake central cheu nentugekei ko, tüfa küzaukei feichi electricidad newen meu tañi nentumekeal ko ka trapümtuwal kiñe katrünko meu malliñ reke, fey zuamgele ka konkei ñi zoi fanentu wituwal ko ñi küme nentugeal ta feichi electricidad newen ko meu.

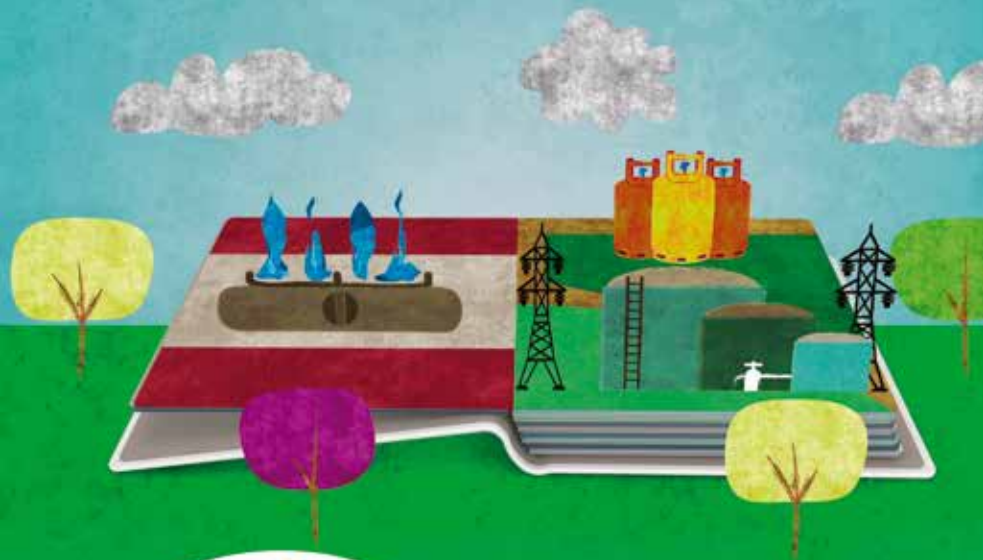
Ko newen meu tripakei ta fentren kellu kom feichi newen mülen ta Chile mapu mu ka lif newen gei ñi tripaken wülkelai ta poz kürüf invernadero reke femlai ka puwkelai ta wenu mapu meu.



CHUMGECHI AM TRIPAKEY FEY TI ÜYÜMGECHI KÜRÜF NEWEN?

Üyümgechi kürüf newen mülekei ta ponwi mapu meu ka afkei. Tayiñ Chilemapu mülekei epu üyümgechi kürüf: kizu mülen ponwi mapu mu ka feichi nentugekelu ta üyümgechi ko, kütral ko pigekei. Kizu mülen feichi üyümgechi kürüf zoi tripakei ta Magallanes pigechei willi mapu, welu elugekei ta feichi mapu meu müten. Kake püle mülei ñi küpalgeal kakeñ püle.

Feichi kütralko nentugelu zuamniegei cheu malütugeken, cheu kizu tripalen kam küpalelu kañpüle.



Feichi üyümgechi kürüf zuam niegei ta zeumayal electricidad newen meu feichi areko meu ñi zeumameken newen, ka niegei ta epu turbina: kiñe tukugei üyümgechi kürüf kagelu areko ñi würwan. Kom fachi zeuma meken newen zoi nentulai wezake poz kürüf mülen kakeume.

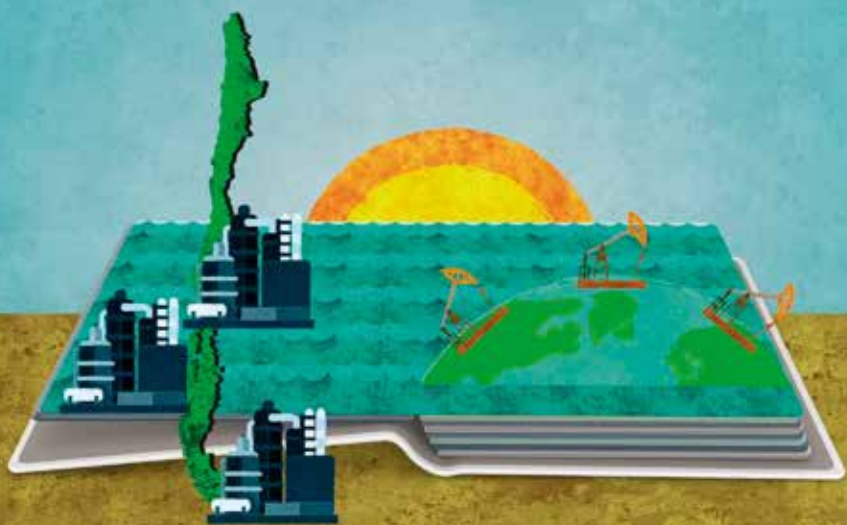
Üyümgechi kürüf fill zuamniegei tayiñ ruka meu, zeumagemum chemkün ka yegeam chemkün, ka yechekelu pagillwe, taxis ka küzaupeyüm yepagillwe rume amulgei rupan tripantu meu.



CHUMECHI AM TRIPAKEY FEY TI KÜTRALKO PIGECHI NEWEN?

Fey tichi kütralko münche mapu mülekei welu afkei. Nentugekei kakeume newen zeumageam ta electricidad newen zuamniegei feichi yechemkünkeli pagillwe ka cheu zeumagekei chemkün.

Tayiñ Chile mapu nieyiñ cheu mülei kütralko, welu epe kom feichi kütralko küme elgepelu feichi cheu malütugepei epe kom küpalniegei ta kake mapu.



Wünelumu tripalelu malütugen kütralko fey ta diésel pigepei, ka kerosene, negümal pagillwe yechepelu ka üyümchi kürüf zeuma iyaelpelu.

Ka feichi Kofi wüwan electricidad newen nentulu ka zuamigün feichi tripalelu ta kütralko meu fei küzaukei kiñeke mu, re tañi küme müleam ñi nentu nentu meken ta electricidad newen müten.

Tüfachi kütralko ñi newen tripan rume zuamniegei feichi pagillwe ye chemkün pelu, mapu meu kam lafken miawpelu ka kürüf pagillwe miawpelu yeche pelu feichi tripaken kütralko meu. Welu feichi kütralko nentukei wezake poz kürüf kutrankelu ta mapu, feimu fachantü kintu kintugei feichi zoi lifgechi newen.



Kütral ko newen



Üyümgechi kürüf



Üyümgechi ko



Kerosene

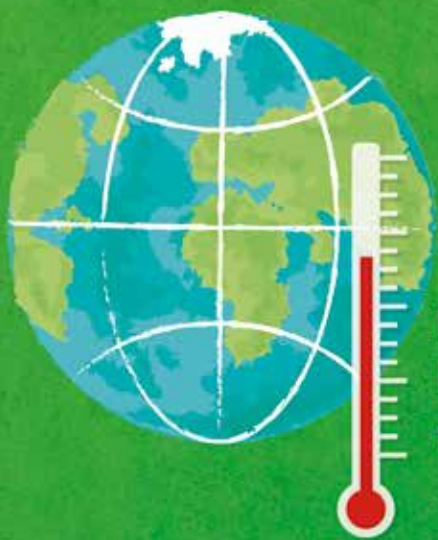
CHUMGECHI AM TRIPAKEY FEY TI KUYUL NEWEN?

Kuyul ta nentukei newen ñi kuifi mülen mapu meu ka afkelai. Mülekei feichi centrales cheu nentugei newen are meu, cheu kütraltugei ka nentugei fütrake are feimeu wazkükei fentren ko kuiwan kuiwan kei, feimeu negümkei feichi turbine püna mülelu kiñe electricidad newen zeumagelu.

Kiñeke zeumakelu chemkün ka zoi kuifi küpan petu zuamigün kuyul ñi eñumtuam.



Lüpümgen kuyul, feimeu tripakei wesha nümu ka pukem zugu kake poz feimu pozkei ta fill mapu ka kürüf meu pozkei, feimu zoi azgei ñi reyituam kakeume lifgechi newen.

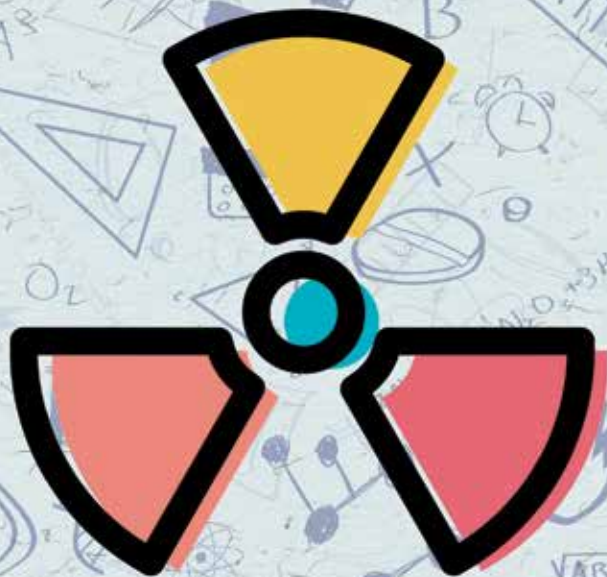


**Reyitun kuyul
kakeuma lifgechi
newen**

CHEM AM TA NUCLEAR NEWEN PIGEKEN?

Fill mülen wallontu mapu meu niepei ta pichike fün atomo pigei. Feichi nuclear newen fei tripakei chumül trawüken ta epu piuke reke niepelu zoi fanenolu, fei ta fusión nuclear pigepei kam chumül wüzakei feichi atomo zoi fanelu feichi zeuman fision nuclear pigekei. Fachi wüzamgen nucleo lef tripakei feichi neutrons ka tripakei füttra are newen.

Tayiñ Chile mapu mu nielayiñ feichi küzaulu ta nucleo tañi nentual electricidad newen, zuamniegei ta küme azkintuwal ñi zeumageal ta küpachi antü meu. Mülefui ta epu ruka cheu ta kintuyagei feichi reactor epe meli mari tripantu amulepei fei ta zeumakei pagillwe radiactivo zuamniegei ta llakontuwan kutran cancer pigechi kutran.



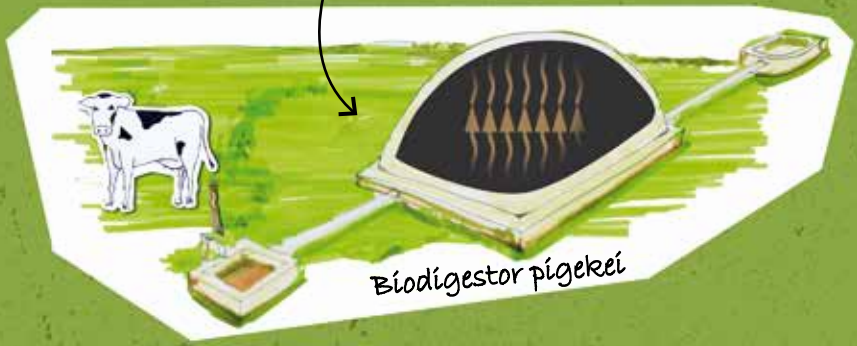
CHEMANCHI TA KALÜL TRIPANCHI ÜYÜMCHI KÜRÜF?

Üyümchi kalül kürüf fei ta afkelai. Kom feichi me waka kam zañwe zeumagekei feichi kürüf newen, welu konkei ta zewü ka tripalekei ta wezake nümuchi kürüf ka fei rume zuamkelai ta che.

Chumgechi zeumagekei feiti newen fei tripakei funalu ta me (nürüflelu ka neyen nienolu) me kullin kam poz tripalu kechan. Kiñe funa niepelu pagillwe tukugei küpü ka mülekei pichike piru fei ta funakelu chemkün fei tripakei üyümgechi kürüf.



Funankelu pagillwe
nienolu neyen.



Biodigestor pıgekeı

Feichi uyumgechi kürüf tukugei ñi zeumayam
electricidad newen ka kom feichi küpü tripalu tukugei
ta mapu meu kümegeam ta gan. Feimu küme elgekei ta
feichi pozgechi küpu ka nentugeafui ta kullin.



CHEM AMCHI MAMÜLL KA CHUMGECHI AZGEKEI?

Kom feichi mamüll tripalu pellets shümüllko pigekei, fei ta afkenolu newen gei. Kom feichi are tripalu ta mamüll meu fei ta zuamniegei ta eñumtuam ta ruka ka ta zeuma iyael meu, kom ruka mülelu tayiñ mapu meu zuamniegei. Feichi mamüll ta inalei feichi nentu newen pelu tayiñ Chile mapu, unelu mu mülei feichi kütralko.

Azkintuniegei tañi zoi lüpümgenoam ta mamüll kom nentugepen ka trürleai ta anümkan aliwen kiñe mel meu, feimu küme amuleai tañi niepen ta mamüll kütraltuam, kümeke mamüll, ankülelu ka traf gillatumeken, ka zuamniegei ta kümeke kütraltuwe mülelu ta waria meu, ka küme ñükümtu müleal ta ruka fei meu zoi münaleai ta pozgechi fitrun.



CHEM CHUMAI TA BFEIOCHI NEWEN GÜZ ZUGU MÜLEFULE?

Mülele güz zugu, kiñe fütta nüyün rume, kom feichi electricidad newen katrügei genowal ta allfeñtunoalu ta che. Ka feichi güneniefilu ta electricidad newen azkintunieai tañi chumlen. Ka famgechi leligeai günenielu üyümchi kürüf.

Mür feichi zugu, kizuke gengelu küzau mülei ñi azkintuwal ka küme aztukual, kom tañi pu küzaufe egu ka wülzugunielu feichi Ñizol electricidad newen ka üyümche kütral (SEC). Feimeu feichi ka müleal newenchi zugun zuamgeai kiñeke antü.



Ka kom feichi küttralko negümlu pagillwe yachepelu mülekei feichi cheu tukugekei feichi newenko ka niekei tañi trapümgeam ka muleam kiñeke antü ñi zuamiegen.

Llúkanlu che amukei feichi cheu müleyüm feichi küttralko ñi tukuwal tañi pagillwe yechepelu feimu ta rume zuamniegei llúkan meu ka feimu pürüm afkei. Feichi zugu meu, unen meu elugeai ta feichi küttralko pu ambulancia ye kutranpelu, ka feiti niepelu tralka ka feichi chogümpelu lüpüm feita kellukelu ta che mülele kuñiw zugu.



FEUKLA ZOI KIMNIEIMI TAMI NEWEN ZUGU

Feula kai mageltueimu tamün konal tayiñ zeumayam küme niewal ta newen zugu tayiñ Chile mapu.

Petu zeuma mekeyiñ cheu eimi kimaimi ka konküleaimi feichi zugun chumgechi niewayiñ feichi newengechi zugun.

Eimün pu che zoileimün ka eimi konküleaimi fechi zugu meu.



**Ministerio de
Energía**

Gobierno de Chile



www.energia.gob.cl
www.mienergia.cl